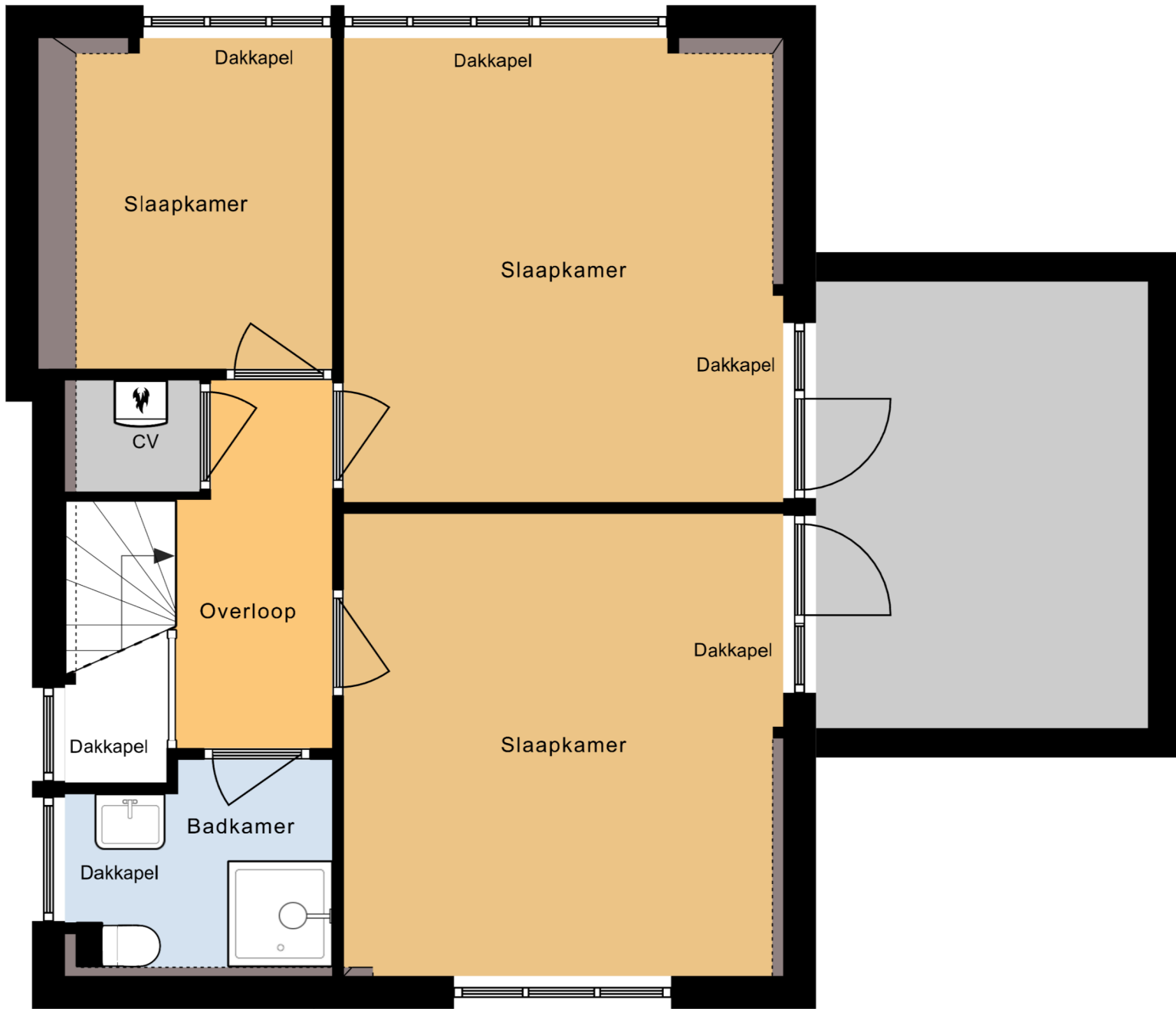


Kelder

Kelder



Begane Grond



Verdieping

Schuur

The diagram shows a rectangular room with a thick black border. The interior is a light gray color. The word 'Schuur' is written in the center of the room. On the bottom edge, there are two door symbols, each consisting of three horizontal lines and a small square. A line extends from the right door symbol, forming a triangle that points downwards. On the right edge, there is a vertical door symbol consisting of three vertical lines and two small squares at the top and bottom.

Schuur